

*Plant Biotechnology  
Association in Kyoto*  
**The 31st Symposium**

Cosponsored by plant organelle  
genomics research center, Kyoto  
Sangyo University

**13th December, 2013**  
**Friday**  
**14:30~17:30**  
**Kyoto Sangyo University**  
**Bld. 15, 1st floor**  
**Room 15102**

**Kyoto Sangyo University**  
**Motoyama, Kamigamo, Kita-**  
**ku, Kyoto 603-8555, Japan**

[http://www.kyoto-  
su.ac.jp/english/school/location.html](http://www.kyoto-su.ac.jp/english/school/location.html)

**Access**

(1) Subway Kokusai-kaikan st. →  
Kyoto Bus (line 40), Kyoto Sangyo  
University bus stop

(1) Subway Kitaoji st. → City bus  
(line north 3) or Kyoto bus, Kyoto  
Sangyo University bus stop

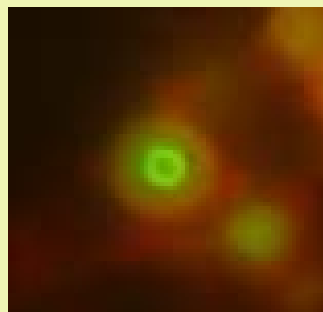
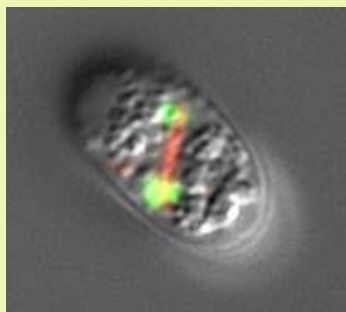
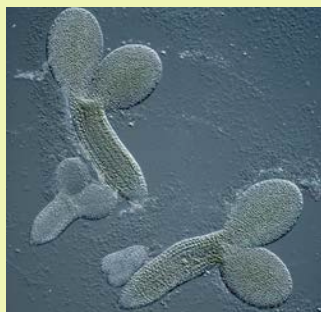
(1) Keihan line Demachiyana st. → Eizan  
line Nikenchaya st. → Shuttle bus to  
University

(2) Keihan line Demachiyana st. → Kyoto  
Bus (Hirogawara 32, Shizuhara-Shiroyama  
34, Kyoto Sangyo University Express 36)  
to University bus stop



# International plant meeting in Kyoto

~Messages from young scientists~



## The 31st Plant Biotechnology Symposium Program

14:00 Desk Open

14:30 Opening Remarks

14:40 **Christian Breuer, Ph. D. (CSRS, RIKEN)**

Overcoming environmental limitations for plant growth- getting more for less

15:10 **Diana Buzas, Ph. D. (Nagahama Institute of Bio-Science and Technology)**

A FeS cluster biogenesis protein controls DNA methylation dynamics

15:40 **Yadav P. Gyawali, Ph. D. (Kyoto Sangyo University)**

Comparative study on the mitochondrial genomes of alloplasmic lines of  
wheat

16:05-16:20 Coffee Break

16:20 **Hokuto Nakayama, Ph. D. (Kyoto Sangyo University)**

Developmental and molecular mechanisms of the heterophylly of lake cress

16:40 **Mie Ichikawa (Kyoto Prefectural University)**

SH3 domain-containing protein (SH3p) family molecules are involved in the  
root gravitropic response and salt tolerance in *Arabidopsis*

16:55 **Fumi Fukada (Kyoto Prefectural University)**

CoBub2/CoBfa1 is required for G1/S phase progression and infection related  
morphogenesis in *Colletotrichum orbiculare*

17:10 **Ai Sasou (Kyoto Prefectural University)**

Control of the foreign polypeptide localization into the specific layer of protein  
body type I in rice seed

17:25 Closing Remarks

17:45 Mixer (Lounge Furusato, Kyoto Sangyo University)

**【Registration】**

Symposium is open to everybody. Come to the desk directly.

**【Mixer registration】**

E-mail or fax by 7<sup>th</sup> Dec. 2013 to: [terachi@cc.kyoto-su.ac.jp](mailto:terachi@cc.kyoto-su.ac.jp) JPN 3,500 (1,500 for students)

**Contact person**

**Toru Terachi ([terachi@cc.kyoto-su.ac.jp](mailto:terachi@cc.kyoto-su.ac.jp))** Fac. Life Sciences, Kyoto Sangyo University

Motoyama, Kamigamo, Kita-ku, Kyoto 603-8555, Japan

〒603-8555 京都市北区上賀茂本山 京都産業大学 総合生命科学部 生命資源環境学科 寺地 徹 宛

TEL: +81-75-705-1896, FAX: +81-75-705-1914, E-mail: 寺地 徹 [terachi@cc.kyoto-su.ac.jp](mailto:terachi@cc.kyoto-su.ac.jp)

Organizer: Plant Biotechnology Association in Kyoto, <http://www2.kpu.ac.jp/assoc/kpba/>

Plant Organelle Genomics Research Center, Kyoto Sangyo University